

ASSOCIATION of
PROFESSIONAL
HUMANE
EDUCATORS
Empathy through Education

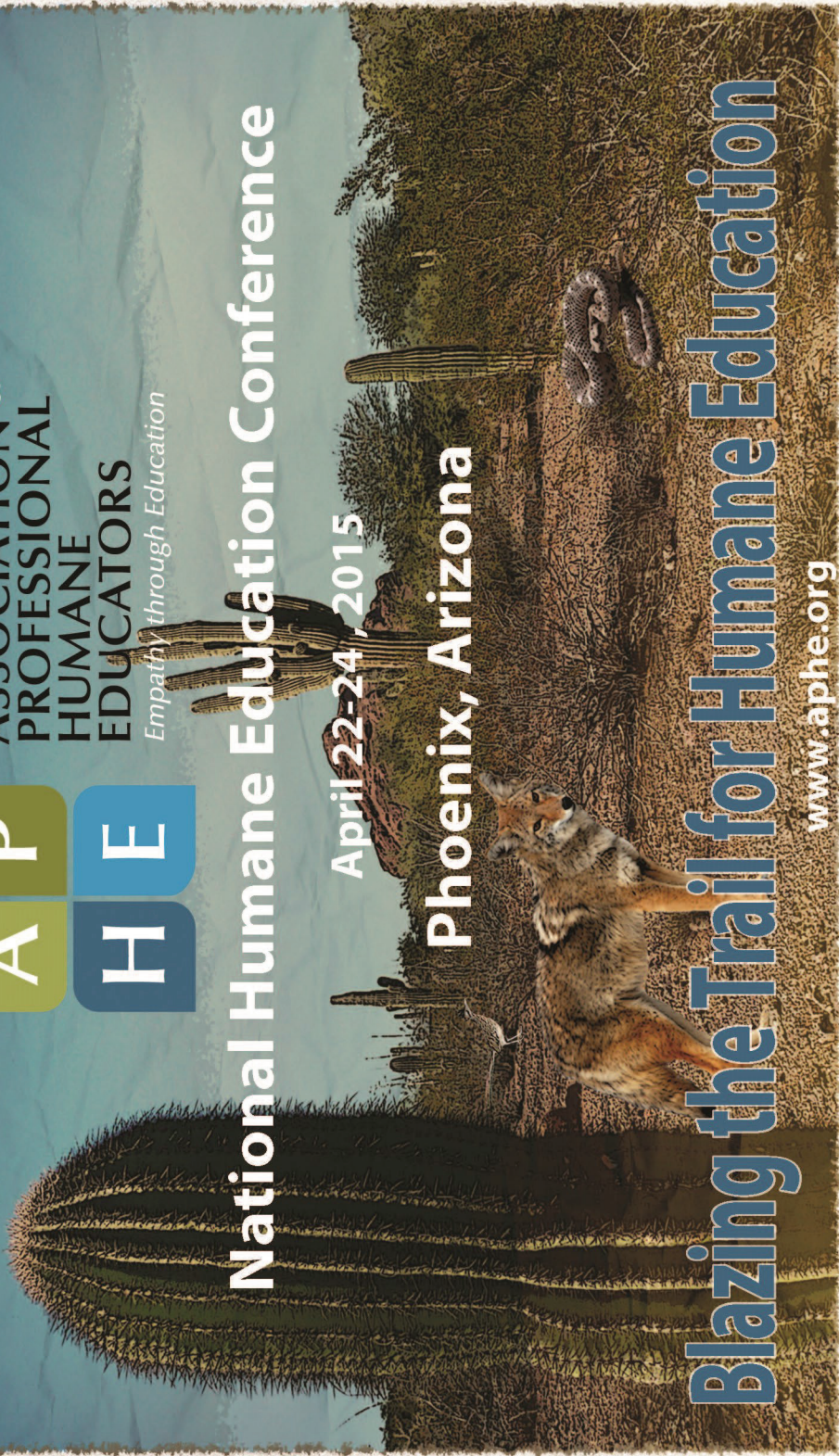
National Humane Education Conference

April 22-24, 2015

Phoenix, Arizona

Blazing the Trail for Humane Education

www.aphe.org



Special thanks to the following sponsors for supporting the
2015 APHE National Humane Education Conference.

Conference Host



\$5000 Grant



KENNETH A. SCOTT
CHARITABLE TRUST

Benefactor Level (\$2000)



Promoting Humane Education Since 1918
www.Latham.org

Mentor Level (\$1500)



Best Friends

Best Friends Level (\$500)





ASSOCIATION of
PROFESSIONAL
HUMANE
EDUCATORS
Empathy through Education

Blazing the Trail for Humane Education

2015 National Humane Education Conference

April 22-24, 2015

Phoenix, Arizona

Conference Agenda

Wednesday, April 22, 2015

6:30-8:30 P.M.

Pre-Conference Mixer (Arizona Animal Welfare League & SPCA) Shuttle service provided

Meet and greet fellow humane educators while enjoying complimentary food and beverages at the Arizona Animal Welfare League & SPCA.

Thursday, April 23, 2015

7:30-8:30 A.M.

Check in (All sessions held in Palm A/D Room)

8:30-9:00 A.M.

Welcome and Opening Remarks Stephanie Itle-Clark, APHE President

9:00-10:30 A.M.

Forming Partnerships to Offer Interactive Video Conferences in Your Community

Dana Schultz, Animal Friends & Susan Kosko, Crafton Elementary

10:30-11:00 A.M.

Break, Sharing Corral Poster Sessions, Vendors (Xavier Room)

11:00 A.M.-12:00 P.M.

Humane to the Core: Incorporating Common Core into Humane Education

Amie Waller and Laura Leonard, San Diego Humane Society

12:00-1:30 P.M.

Lunch, Sharing Corral Poster Sessions, Vendors (Lunch in Courtyard East)

1:30-3:00 P.M.

Real Stuff You Can Use... Like Tomorrow Darya Ansari, Ashley Gibson, & Maggie Amiano, San Francisco SPCA

3:00-3:30 P.M.

Break, Sharing Corral Poster Sessions, Vendors

3:30-4:30 P.M.

Map It! Service Learning Campaign Ingrid Norris, Spartanburg Humane Society

4:30-5:30 P.M.

APHE Membership Meeting hosted by the APHE Board. Join us and make your vote count on important association business. Learn about this year's accomplishments and what's coming soon, including the location of the next National Humane Education Conference!

6:30-11:00 P.M.

Dinner Reception and APHE Auction (Abbey Room)

Enjoy dinner and a fun and lively auction to raise money for the Nathania Gartman Memorial Scholarship Fund. There will be a wide variety of wonderful silent and live auction items to bid on. Cash, checks and credit cards will be accepted for auction purchases. Non-registered conference attendees can join for an additional fee. Please contact conference@aphe.org to register guests.

Featured Speaker: Phil Arkow LINK Coalition

Friday, April 24, 2015

8:30-8:45 A.M.

Welcome (Palm A/D Room)

8:45-9:45 A.M.

Classroom Programs: An Expansive Model for the 21st Century (Palm A/D Room)
Kris Haley, Arizona Humane Society

City Critters: A Collaboration with Pre-Service Teachers (Palm C/F Room)

Lisa Forzley, Detroit Zoological Society

10:15-10:45 A.M.

Break, Sharing Corral Poster Sessions, Vendors

10:45 A.M.—12:15 P.M.

You Better WERK: Providing your Purpose through the Art of Selling Yourself (Palm A/D Room) Justin Kurup, East Bay SPCA

From Anecdotes to Data Sets: The Long and Winding Road to Program Evaluation
(Palm C/F Room) Susan Wallace & Nancy Barr, International Fund for Animal Welfare

12:15-1:15 P.M.

Lunch, Sharing Corral Poster Sessions, Vendors (Lunch in Courtyard East)

1:15-2:15 P.M.

Lessons From a Pioneering Humane Education Program in China (Palm A/D Room) Pei-Feng Su, ACT Asia for Animals

Meeting Your Community's Needs: Creating Effective Programming Using the Humane Education Frameworks of Social Change (Palm C/F Room)
Erin Comaskey & Stephanie Itle-Clark, The Humane Society of the United States

2:15-2:30 P.M.

Break, Sharing Corral Poster Sessions, Vendors

2:30-3:30 P.M.

Got Cats? How Education Powers Large Scale TNR Project in Rural Communities (Palm A/D Room) Valerie Ingram & Alistair Schroff, Lakes Animal Friendship Society

3:30-5:00 P.M.

Ecological Identity: What Is It and Why Does It Matter (Palm A/D Room)
Deb Matlock, Wild Rhythms

* Please note- Friday's schedule features concurrent sessions. You will receive all information from all sessions via www.aphe.org/resources/Documents/APHEPhoenixConf.zip

Other Conference Details



Conference Accommodations

The conference will take place at the Tempe Mission Palms Hotel and Conference Center, E. 5th St, Tempe, AZ. The hotel is located within walking distance to downtown Tempe's Mill Avenue district and over 100 restaurants,

bars and shops. Learn more by visiting www.downtowntempe.com.

Nathania Gartman Memorial Scholarship Fund Benefit Auction

This cannot-miss event is filled with fun and excitement. Join guests, fellow members, and the APHE Board of Directors for the thrill of bidding on items that will enhance outreach programs or relax the soul of a humane educator. Funds raised will help fellow humane educators attend future APHE National Humane Education Conferences.

Resource-Sharing Tables

Bring resources from your organization's humane education program to share so educators from around the country can learn about your great programs!

APHE Merchandise and Membership Support Available

Visit www.CafePress.com/APHE and purchase new items with APHE's logo! Shirts, coffee mugs, pajamas and more! We will also have a computer standing by to demonstrate how to use the online Members' Area and Listserv.

[Humane Society Academy]



THE HUMANE SOCIETY
OF THE UNITED STATES

Vendor

Humane Society Academy (HSA) offers a variety of development opportunities for professionals, volunteers, and advocates in the field of humane education and animal

protection. Online offerings include self-paced and instructor-led courses, credentialing programs, and webinars. HSA is also maintains the new Humane Education Registry. Learn more at humanesociety.org/academy.

Access Presenter Materials

Revisit what you have learned and access additional information after the conference at www.aphe.org/resources/Documents/APHEPhoenixConf.zip

Name Tags

Please return the name tag holders at the end of the conference so they may be re-used at future programs.

Things to do in Phoenix

www.visitphoenix.com

National Humane Education Conference Committee

Special thanks to our 2015 APHE National Conference Committee their assistance in planning and coordinating the conference:

Maggie Amiano

Sandy De Lisle

Carol Everett

Stephanie Itle-Clark

Dezarae Jones-Hartwig

Beth Karzes

Shannon Nalley

Karly Noel

Michelle Ramos

Jennifer Self-Aulgur

Rosie Sevic

Emilie Sinur

Kelley Uber

Stacey Zeitlin

Pre-Conference Activities

APHE is excited to offer our conference attendees an optional preconference workshop on Compassion Fatigue Wednesday, April 22 from 9 a.m.-12:30 p.m. at the conference hotel.

This workshop will explore the reasons why we do this work, what we love and what's hard about it, the signs and symptoms of compassion fatigue and burnout, and provide a variety of tools and strategies to sustain our involvement in a challenging field. Participants will leave with knowledge about stressors, how to focus on what satisfies us personally, and with the ability to build a self-care plan.

The workshop includes materials and snacks.

Workshop Cost: \$30 per person

Visit <http://aphe.org/event-1774809> to register



Join APHE conference attendees at an optional excursion to Southwest Wildlife Conservation Center, Wednesday, April 22 from 8 a.m.-1 p.m.

Southwest Wildlife rescues native wildlife that have lost their homes to development, or are found injured, orphaned, or abandoned. When possible, the animals in their care are rehabilitated and released back into the wild. Those animals that cannot survive in the wild can live out their lives at the accredited sanctuary. Southwest Wildlife is also an official holding facility for the Mexican gray wolf recovery program, a critically endangered species.

The excursion includes transportation, boxed lunch, and a guided tour of the facility.

Excursion cost: \$50 per person.

Visit <http://aphe.org/event-1762061> to register.

Don't miss out on the APHE Mixer on Wednesday, April 22 from 6:30-8:30 p.m. Get ready to Aloha in Arizona and hula at the Arizona Animal Welfare League. APHE is excited to offer live entertainment with Polynesian dancers and musicians. A local professional group and dance school led by native Hawaiian, Naleni Francisco, will perform a variety of hula, Tahitian, and South Pacific dances. Accompanied by live ukulele and guitar, APHE members will enjoy paradise in Arizona. So bring your flip flops, enjoy the sun, and mix and mingle! Transportation provided! Meet in the front lobby of the conference hotel for a ride!



2015 APHE National Humane Education Conference

Presentation Abstracts

Forming Partnerships to Offer Interactive Video Conferences in your Community

Dana Schultz, Animal Friends & Susan Kosko, Crafton Elementary

Interactive video conferences supplement Humane Education programming to the benefit of both students and the animal welfare organization. The humane educator can teach students who otherwise may not take a field trip to the facility nor host a classroom presentation. Participants will consider how to engage community partners and will join an interactive video conference with third graders from Crafton Elementary and Captain Chris Desmond, founder of the 10,000 Islands Dolphin Project.

Humane to the Core: Incorporating Common Core into Humane Education

Amie Waller & Laura Leonard, San Diego Humane Society

Common Core Standards are being used in schools in over 46 states. Common Core is changing how educators teach, what students need to know, and how students show understanding of the content. With schools crunched for time and resources, Humane Educators can become a valuable classroom asset by incorporating Common Core standards into lessons. During the presentation, Humane Educators will receive the tools and resources they need to incorporate Common Core principles into Humane Education.

Real Stuff You Can Use... Like Tomorrow

Darya Ansari, Ashley Gibson, & Maggie Amiano, San Francisco SPCA This action-packed, rotation-based presentation will bring conference attendees to their feet for four– twenty minute sessions with a speaker. The sessions will teach and practice real-life, humane-themed ice-breakers, games, crafts, and hands-on activities. Attendees will be playing the games, doing the ice-breakers, following the activities, and making the crafts to ensure a fun and memorable experience. All will leave with a handful of fresh, fun, educational ideas they can implement in their own education programs immediately.

Map It! Service Learning Campaign

Ingrid Norris, Spartanburg Humane Society

Using the Roots and Shoots Service Campaign model, participants will learn how to gather data from PetPoint or use their Excel data to enter into ARC GIS Online. With these tools, participants can map animal issues in communities. Participants then will use that information to prioritize community needs and plan a service learning campaign with students to address them.

Classroom Programs: An Expansive Model for the 21st Century

Kris Haley, Arizona Humane Society

This presentation invites educators to consider an expanded, multiple-visit program that serves to more deeply instill the messages of empathy and compassion. Through innovative and interactive classroom projects such as creation of humane-based school resources, in-classroom video production, activities that directly connect students to shelter animals and campaign creation fulfillment, students will be empowered to move toward action, service, and leadership.

City Critters: A Collaboration with Pre-Service Teachers

Lisa Forzley, Detroit Zoological Society

City Critters is an outreach program that helps children learn about the amazing animals that share their neighborhoods. Using realistic puppets, literature, and role-playing, students explore ways to peacefully co-exist with urban wildlife. The Detroit Zoo trains pre-service teachers to facilitate the program, allowing the reach to extend to thousands of children each year. Learn the ins and outs of this award-winning program and how to replicate a similar model at your organization.

“You Better WERK” : Proving Your Purpose Through the Art of Selling Yourself

Justin Kurup, East Bay SPCA

This presentation will help humane educators gain support within their organization through unique reporting methods. We will provide strategies to help market a humane education department to upper management as well as discuss tools on how to truly sell your work. This workshop will go beyond data collection, program evaluations, and pre/post-surveys helping educators to implement creative methods to reporting success. Attendees will walk away with knowing how they can illustrate the impact made on their community.

From Anecdotes to Data Sets: The Long and Winding Road to Program Evaluation

Susan Wallace & Nancy Barr, International Fund for Animals

Are you making a difference? Do students think and feel differently after your program? How do you find out? What type of evidence is required for stakeholders and decision-making? After more than two decades delivering IFAW's Animal Action Education Program to classrooms worldwide, we decided to find out. Join us as we share our long and winding (ok, bumpy!) road to program evaluation, and discover how you might pave a smoother road to measuring impact.

Lessons from a Pioneering Humane Education Program in China

Pei-Feng Su, ACTAsia for Animals

Learn about ACTAsia's pioneering humane education program in China, which is currently being presented in 52 public schools in five major cities to more than 6,000 children in a 12-session course. Attendees will discover ACTAsia's strategy for embedding the course in schools' curriculum, the methods used to spread the course into new schools, and how ACTAsia has overcome barriers stemming from limited resources and a cultural resistance to activity based learning.

Meeting Your Community's Needs: Creating Effective Programming Using the Humane Education Framework of Social Change

Erin Comaskey & Stephanie Itle-Clark, The Humane Society of the United States

Creating effective humane education programs require an understanding of the needs of the community you are trying to reach. In this presentation, we will introduce the Humane Education Frameworks of Social Change and demonstrate how they influence program development. Participants will gain understanding in instructional design concepts and prepare to apply them in their own work.

Got Cats? How Education Powers Large-Scale TNR Project in a Rural Northern Community

Valerie Ingram & Alistair Schroff, Lakes Animal Friendship Society

In 2013 and 2014, Lakes Animal Friendship Society (LAFS) organized the largest TNR project ever undertaken in Northwest British Columbia, Canada. Community and student education helped make the project a huge success. This presentation will outline the educational aspects of the LAFS TNR Project, and provide opportunities for discussion about how humane education provides leverage for animal welfare projects and vice versa.

Ecological Identity: What Is It and Why Does It Matter?

Deb Matlock, Wild Rhythms

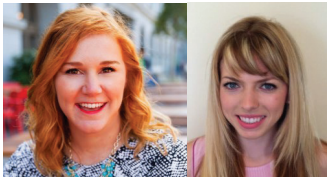
Ecological identity is at the root of all our decisions regarding the environment, animals, and each other. However, it is not often considered in education, natural resource management, policy discussion, conservation planning, etc. This presentation will explore what ecological identity is, why it is important, and how it impacts our sense of self and personal decisions. Emphasis will be placed on including ecological identity work in our education programs.

Meet Our Presenters



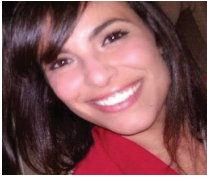
Internationally acclaimed lecturer, author and educator **Phil Arkow** is coordinator of the National Link Coalition – the National Resource Center on The Link between Animal Abuse and Human Violence – and editor of its monthly LINK-Letter. He chairs the Latham Foundation’s

Animal Abuse and Family Violence Prevention Project. He teaches Animal Abuse and Human Violence courses at the University of Florida and Animal-Assisted Therapy courses at Harcum College and Camden County College. He was one of the founders of the National Link Coalition, the National Animal Control Association, and the Colorado and New Jersey federations of animal welfare agencies. He has served with the American Veterinary Medical Association, the ASPCA, the American Humane Association, the Delta Society, the Animals & Society Institute, the National Coalition on Violence Against Animals, the National District Attorneys Association, and the American Association of Human-Animal Bond Veterinarians. He recently received a Lifetime Achievement Award from New Jersey Child Assault Prevention.



Maggie Amiano & Ashley Gibson make up the humane education team, along with Darya, at the San Francisco SPCA. They each have one dog (Rosie, Raja, and Frisco, respectfully), who regularly attend humane education events. Nina and Ashley both got

their start with SFSPCA as summer camp counselors and stuck around in the department teaching youngsters year-round and developing curriculum for ongoing and new programs. Maggie joined SFSPCA two years ago, with experience in humane education as well as classroom teaching.



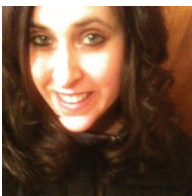
Darya Ansari spent several years as an elementary school teacher, and has now been in the field of humane education for two years. She joined the San Francisco SPCA team for summer camp and they immediately found a way to keep her on staff full-time. She is a passionate and upbeat educator, and truly loves this field. Her dog , Athena, is a bomb-proof humane education ambassador, and can be seen giving kisses and accepting pets from kids all throughout San Francisco, when she's not at home with her frenemy cat, Juliette.



Nancy Barr is Director of International Fund for Animal Welfare's global Animal Action Education programs, which reaches 5,000,000 educators and young people worldwide each year with animal welfare and conservation-themed teaching resources and special events organized by IFAW teams in 20+ countries. The program focuses on meeting educator needs by integrating humane and environmental education with core curricula and organized youth activities. Prior to joining IFAW in 2006, Nancy worked as an independent documentary producer, features editor focusing on environmental and social issues for the United Nations, and International reporter for Time Magazine and CBS News. She holds a Master's degree in International Relations from the University of Southern California and a BA from Williams College.

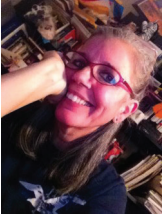


Erin Comaskey is a former classroom teacher from New Jersey, where she received her B.S. in early childhood education and English from the College of New Jersey. She completed her M.A. in educational psychology from McGill University and eventually went on as the research project manager in literacy and technology initiatives for the Center for the Study of Learning and Performance. She is currently the Manager of Curriculum and Training for the Humane Society Academy.



Lisa Forzley has been the Humane Education Manager at the Detroit Zoological Society, the only position of its kind at any zoo, for eight years. She is also a MOGO Workshop facilitator for the Institute for Humane Education. Lisa graduated from Michigan State University with a B.A. in

Elementary Education and received her M.Ed. in Humane Education from the Institute for Humane Education. She previously served on the Board of Directors for the Association of Professional Humane Educators and the Michigan Alliance for Environmental and Outdoor Education. She currently lives in Royal Oak, Michigan and is hoping to adopt a companion animal sometime soon.



Kris Haley holds certification in both Humane and Character Education and currently serves as the Manager of Community Education for the Arizona Humane Society. She has developed and delivered many innovative programs including the national award-winning Peer Education Enrichment Program— a service and leadership offering that trains senior students to present blended

Humane/Character Education lessons to elementary students. Most recently, she created and introduced a cutting edge, ten-week elective course (Arizona Humane Advocacy 101 and 102) to 7th and 8th grade students at a local middle school and authored/introduced a multi-module, in-house, shelter and staff development training on empathy and customer service and grief support. Kris is in the process of completing her first book, *“World Peace— Nonviolence Toward Animals is Right on the Tip of Your Tongue!”* She and her husband, a former animal paramedic and cruelty investigator, share their home with a bevy of beloved rescues.



Valerie Ingram is a certified teacher and president of the Lakes Animal Friendship Society (LAFS) in the small community (pop. 7000) of Burns Lake, British Columbia, Canada. She has 18 years of

experience teaching all grade levels but spent most of her career teaching kindergarten. A lifelong love of animals and a commitment to teaching care, compassion, and respect made humane education a logical career move (even at no pay!). Valerie volunteers in classrooms around the community and northwest BC. She mentors others who volunteer in communities across the region. **Alistair Schroff** is Valerie’s co-presenter and husband, a forester, and volunteer with LAFS. While he has difficulty keeping up with Valerie’s passion and enthusiasm, he brings some business experience and helps with bookkeeping, proposal writing, and whatever else needs doing. LAFS works to improve the lives of animals, their

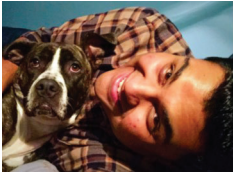
guardians, and the community which is 150 miles from the nearest humane society and has only a very small cat shelter and no dog shelter. We focus on education about animal care and compassion and bite safety, as well as spaying and neutering for animals from lower-income families, and shelters (houses) for dogs and community cats in need. Since 2008, they have completed over 5000 students visits, spayed and neutered over 1000 animals, and delivered almost 200 houses to critters in need. They are working on extending these programs throughout northwest BC. Valerie and Alistair share their home with rescued and very spoiled pooches, Lulu and Daisy.



Stephanie Itle-Clark is the Director of Education at The Humane Society of the United States. Her work focuses on training and development as well as prosocial and humane education. She received her Ed.D. in Educational Leadership and Change in 2013 from Fielding Graduate University. Dr. Itle-Clark's research interests includes infusion of humane education in teacher professional development and reform the standards-based classroom as well as distributed learning practices. She is a Certified Humane Education Specialist and currently serves as the Board President for the Association of Professional Humane Educators.



Susan Kosko has 22 years of teaching experience with a Master's Degree in Education and Reading Specialist certification. She has been the building Reading Specialist at Crafton Elementary for 15 years, with experiences also teaching primary, gifted support, and inner city group home children. Her efforts focus on incorporating environmental studies as a motivational component within her lessons. Susan and her class were recently featured on *Sea Rescue*, an Emmy-nominated educational show, due to their involvement with a live dolphin rescue. Connecting lessons to real-world learning are at the core of Susan's teaching philosophy. She lives in Pittsburgh with her husband, two children, and Labrador retriever.



Justin Kurup has worked as the Humane Education Coordinator for the East Bay SPCA since the beginning of 2013. He graduated from the University of California, Davis with a BS in Animal Science with an emphasis in companion and captive animals. Previously, Justin has taught life skills and competitive speech at the high school level. Growing up in the San Francisco bay area, Justin has been able to form many relationships and connections with the communities, rescue groups, and veterinary clinics he has served for over the past decade. He has been devoted to a humane lifestyle and belongs to a playful pit mix named Meeko. Justin believes that working with diverse populations is the best part of his job.



Laura Leonard is a Community Outreach Educator for San Diego Humane Society. She began working as an educator for SDHS in 2011. She assists in curriculum creation and teaches standards-aligned lessons to grades K-12. Laura created the TRUST program that works with underserved youth to learn positive reinforcement training with animals. She earned her Bachelors and Masters degree in Social Work with an emphasis on the human-animal bond. Laura lives in San Diego with her dog, Kean, and cats, Luna and Charlie.



Deb Matlock, MA is a professional environmental educator and naturalist. She mentors graduate students at Prescott College, teaches at Colorado Mountain College, and assists people and animals through spiritual coaching and shamanic-style journey work. She is also dedicated to exploring her own spiritual connection to life. Her environmental education work includes teaching in the field, offering professional trainings and presentations, and conducting research on the connections of spirituality to environmental education. Her research has been presented nationally and internationally and continues to be a strong focus. She has vast experience designing programming and evaluating curriculum and is currently on the Board of Directors for the Colorado Alliance for Environmental Education. Deb holds a Master of Arts degree from Prescott College in Environmental Education. She is currently pursuing a PhD in Environmental Studies at Antioch University New England focusing on animism and the development of empathy in environmental education programs.



Ingrid Quigg Norris has served as the Humane Education Coordinator at Spartanburg Humane Society in South Carolina since 2006. Before joining the SHS, Ingrid put her passion for educating young children and adults into developing programs for the Watershed Ecology Center at the University of South Carolina upstate. For the past 8 years, Ingrid has dedicated her resourcefulness, creativity, and positive energy into developing dynamic humane education and outreach programs that engage the audiences of all ages on issues facing animals in Spartanburg County.



Dana Schultz, M.Ed., has been the Education Coordinator at Animal Friends in Pittsburgh, PA, since 2005. She and her team of volunteers see up to 9,000 students per year on-site, off-site, in summer camp, and via interactive video conferences. She is a facilitator with the Veterinary Science Initiative and is the co-author of “*Foundational Humane Education: Promoting Love of Nature and Affinity for Animals in Schools and Communities*” in *Teaching Compassion: Humane Education in Early Childhood* (2014). Her favorite part of her job is interacting with her enthusiastic humane educators and the many kind-hearted children she gets to meet. Prior to joining the staff at Animal Friends, she was a classroom teacher for 12 years which included earning National Board Certification, a reading specialist certification, and fellowships with the Western Pennsylvania Writing Project and the National Endowment for the Humanities. She lives near Pittsburgh with her husband and dogs.



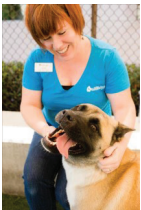
Pei-Feng Su co-founded ACTAsia for Animals in 2006 and serves as the Executive Director. She has been active in animal welfare and humane education for twenty years. She has led numerous campaigns in Asia on issues including bear farming, fur farming, illegal turtle trade, zoos, stray animal management, and has extensive knowledge of international animal welfare project management. For five years, Pei-Feng worked for the World Society for the Protection of Animals, where she was Asian Project Manager and Member Society Director. In 2005, she initiated and

co-organized a four-week capacity building residential course in Italy for animal advocates worldwide. She is regularly invited to present papers at international conferences and has published numerous reports and articles on social responsibilities. Pei-Feng has a Master's degree in Sociology. Originally from Taiwan, Pei-Feng is now based in the U.K.



Sue Wallace arrived at the International Fund for Animal Welfare over two decades ago with a wildlife biology degree, several field seasons assisting with marine mammal research, two years teaching environmental education, and lots of enthusiasm for her dual interests of nature and education. She has been involved in many

aspects of environmental education and has taught, directed, or developed K-13 curricula for various audiences in various settings. These curricula have ranged in focus from environmental science and biology to adventure leadership and citizen awareness and responsible action. At IFAW, Sue is delighted to be a member of IFAW's Animal Action Education global team for whom she helps develop animal welfare and conservation education programs, manages special projects, coordinates online education content for all field offices, and mentors new team members.



Amie Waller is a former classroom teacher who joined San Diego Humane Society in 2011. As a Community Outreach Educator, she has developed a passion for helping students develop respect and empathy for animals while collaborating with teachers to bring quality standards-based education into classrooms. The SDHS Outreach Education program impacts over 18,000

children a year in the San Diego County area. Amie has a California Multiple Subject Teaching Credential as well as a Master's degree in Curriculum and Instruction. She lives in San Diego with her dogs Nigel and Oliver.

Association of Professional Humane Educators (APHE)

The Association of Professional Humane Educators is a professional organization for people interested in and supportive of humane and environmental education. It is a membership, not-for-profit organization.

In the 1970s, APHE was first known as the Western Humane Education Association, with the name changed slightly in the 1980s so that it could become the Western Humane and Environmental Educators Association (WHEEA).

APHE, named in the 1990s, retains WHEEA's commitment to promoting humane and environmental education, but without limitation by geographic regions.

APHE's mission is to provide professional development opportunities and networking for educators who promote humane attitudes toward people, animals, and the environment. APHE upholds the highest standards of practice in humane education and has over 345 members in the United States, Canada, and abroad.



ASSOCIATION of
PROFESSIONAL
HUMANE
EDUCATORS
Empathy through Education

The Arizona Animal Welfare League & SPCA is the largest and oldest no-kill shelter in Arizona. Since its founding in 1971, the AAWL & SPCA has grown from adopting a handful of animals each year to a full service animal welfare organization and leader in innovative behavior training, medical care, adoption, education, and community outreach programs. Today the shelter encompasses an onsite veterinary clinic, adoption kennels with a separate cattery, a training and education center, and a freestanding infirmary.

AAWL & SPCA rescues, rehabilitates and re-homes more than 5,000 dogs and cats each year. AAWL also holds a leadership position in education and animal welfare issues by providing community programs, educational tours, camps, workshops, and presentations for the greater metro Phoenix area each year. The AAWL & SPCA's Education department reaches over 3,000 students annually with interactive and effective programs that teach respect for all animals, safety around animals, and responsible animal care while encouraging children who have a natural connection with animals to get involved in promoting kindness.



